

USER QUICK GUIDE

BSC100S BIKE SMART COMPUTER

www.igpsport.com










WUHAN QIWU TECHNOLOGY CO., LTD.

English

1. BUTTONS

Button	Function
Left Button	Short press to power on/long press to power off. Short press to start/pause ride recording.
Right Button	Short press to switch data page. Long press to save the ride record when riding recording. Long press to enter the GPS bike computer setting mode when not riding recording.

2. ICONS

Icons	Description
	Satellite signal
	Bluetooth
	Pause
	Recording
	Incoming call alert
	Battery
	Speedometer (displayed when sensor is connected)


3. GPS BIKE COMPUTER SETTING MODE

- Long press the right button to enter the setting mode (E1~E5), and short press the right button in the setting mode to switch between E1 and E5.
- When the E1~E5 icons are flashing, short press the left button to enter the corresponding setting state.
- Press and hold the right button for 2s to save and exit the setting mode.
- The settings are automatically saved after 10 seconds of no button operation in the setting mode.

	Function	Operation Method	Notice
E1	Unpair phone	1) When E1 is flashing, short press the left button to unpair the phone, and the device will restart automatically.	
E2	Set time zone	1) Enter E2, short press the left button to select the time zone, short press the right button to set the number.	1) Default time zone: UTC/GMT+00:00 (please set the local time zone).
E3	Connect the sensor	1) Enter E3, the device automatically searches for sensors, and the sensor symbol keeps flashing. 2) After the sensor is connected, the corresponding value will be displayed. 3) After entering the sensor search state for 30s, it will automatically exit the setting mode.	1) The sensor needs to be searched and connected again after replacing the battery.
E4	Set wheel diameter	1) Enter E4, short press the left button to switch the number of digits, short press the right button to set the value.	1) Use the speed sensor to set the wheel diameter. 2) Default wheel diameter: 2096mm.
E5	Set metric and imperial units	1) Enter E5, short press the right button to switch between metric (kilometers) and imperial (miles) units.	1) Default unit: Metric (km).

4. PAIRED PHONE

Pairing the phone for the first time.

- 1) Download the iGPSPOORT APP.
- 2) Turn on the Bluetooth of the mobile phone, and use the iGPSPOORT APP to pair the device.
- 3) The BSC100S Bluetooth icon  shows that it has been paired and connected.
- 4) After the GPS bike computer is connected to the iGPSPOORT APP, more functions can be used.

Function	Description
Data Management	Synchronize cycling activities to the cloud.
Smart Notifications	Incoming call.
Sensor Settings	More convenient sensor connection.
Page Configuration	Customize configuration page data, a variety of recommended schemes to choose from.
Alert Settings	Alert reminders that support multiple data.
Automatic Function	Automatic start, automatic pause, automatic lap counting, automatic page turning and various auxiliary functions, convenient for riding.

5. PACKING LIST


- BSC100S x1
- User manual x1
- Standard base x1

6. CONTACT US

 www.igpsport.com

 Wuhan Qiwu Technology Co., Ltd.

 3/F Creative Workshop, No.04 District D Creative World, No.16 West Yezhihu Road, Hongshan District, Wuhan, Hubei, China.

 (86)027-87835568

 service@igpsport.com

Disclaimer:

This user manual is for the user's reference only. If the content or steps are different from the functions of the device itself, the device shall prevail, and Wuhan Qiwu Technology Co., Ltd. will not give any notice.

Copyright belongs to Wuhan Qiwu Technology Co., Ltd.

USER MANUAL

Please log in to the official website to view the details of the manual.

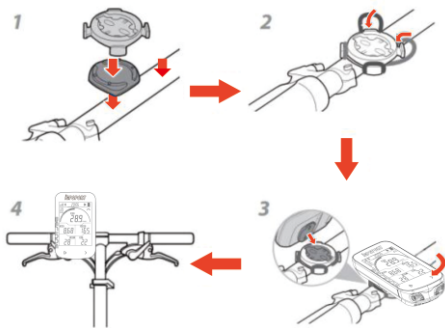
Website and QR code: <https://www.igpsport.com/user-manual>



7. INSTALL THE BASE FOR YOU BSC100S

Secure the computer base to the handlebar by using the included rubber ring.

- 1) Install the rubber pad on the back of the computer base.
- 2) Choose a suitable location on the handlebar to place the rubber pads and computer base.
- 3) Choose a suitable location on the handlebar to place the rubber pads and computer base.
- 4) Align the tab protrusions on the back of the computer with the slots on the base of the computer.
- 5) Place the stopwatch on the stopwatch base and rotate it 90 degrees.



Notes:

- You can also use the iGPSport M80/S80 and the other model computer extension brackets to mount the computer.
- It is recommended that you use the iGPSport official computer base or extension bracket to avoid damaging the computer buckle.

WARNING

This device complies with part 15 of the FCC Rules. Operation is subject to the condition that this device does not cause harmful interference (1) this device may not cause harmful interference, and (2) this device must accept any interference received, including interference that may cause undesired operation.

Any changes or modifications not expressly approved by the party responsible for compliance could void the user's authority to operate the equipment.

NOTE: This equipment has been tested and found to comply with the limits for a Class B digital device, pursuant to Part 15 of the FCC Rules. These limits are designed to provide reasonable protection against harmful interference in a residential installation. This equipment generates, uses and can radiate radio frequency energy and, if not installed and used in accordance with the instructions, may cause harmful interference to radio communications. However, there is no guarantee that interference will not occur in a particular installation. If this equipment does cause harmful interference to radio or television reception, which can be determined by turning the equipment off and on, the user is encouraged to try to correct the interference by one or more of the following measures:

- Reorient or relocate the receiving antenna.
- Increase the separation between the equipment and receiver.
- Connect the equipment into an outlet on a circuit different from that to which the receiver is connected.
- Consult the dealer or an experienced radio/TV technician for help.

To maintain compliance with FCC's RF Exposure guidelines, This equipment should be installed and operated with minimum distance between 20cm the radiator your body:

Use only the supplied antenna.

FCC ID:2AU4M- BSC100

SPECIFICATIONS:

Operating Temperature:-10°~50°C