

TEST REPORT

Report No.: NCT240221292XB1-1

Date: Jun.06, 2024

Page 1 of 4

Applicant : Shenzhen Meini New Energy Co.,Ltd
Address : 705 Xinfu Building, Xin'er Community Center Road, Xinqiao Street,
Bao'an District, Shenzhen
Manufacturer : Shenzhen Meini New Energy Co.,Ltd
Address : 705 Xinfu Building, Xin'er Community Center Road, Xinqiao Street,
Bao'an District, Shenzhen
Products : Li-ion Battery
Model / NO. : 602535,
Series Model : Please See REMARK
Trademark : N/A
Receiving Date : May 28, 2024
Testing Period : May 28, 2024 to Jun.06, 2024

Test Requested: Selected test(s) as requested by client.

Test Method: Please refer to next page(s).

Test Results: Please refer to next page(s).

Conclusion: As specified by client, with reference to Directive EU 2023/1542 to determine Lead(Pb), Cadmium(Cd), Mercury(Hg) contents in the submitted sample.

Signed for and on behalf of
Shenzhen NCT Testing Technology Co., Ltd.



TEST REPORT**REMARK**

502035 350mAh, 752030 500mAh, 802036 500mAh, 703240 930mAh, 602030 300mAh, 501230 130mAh, 501230 150mAh, 602530 400mAh, 602530 350mAh, 603035 600mAh, 503035 500mAh, 403040 450mAh, 602025 250mAh, 804040 1400mAh, 703040 800mAh, 802535 700mAh, 602560 1000mAh, 602535 500mAh, 601335 280mAh, 601435 280mAh, 401119 60mAh, 701230 250mAh, 701230 220mAh, 801230 250mAh, 502030 250mAh, 502030 220mAh, 303450 500mAh, 523450 1000mAh, 350820 40mAh, 802030 400mAh, 802030 450mAh, 902030 500mAh, 102035 600mAh, 103450 1800mAh, 351423 90mAh, 602045 500mAh, 402030 180mAh, 654060 2000mAh, 604060 1800mAh, 902035 600mAh, 702025 300mAh, 702030 400mAh, 802040 650mAh, 902040 700mAh, 602040 450mAh, 303040 300mAh, 303450 500mAh, 360820 40mAh, 402030 200mAh, 402035 250mAh, 402040 300mAh, 402050 400mAh, 402248 400mAh, 402530 250mAh, 402535 300mAh, 403030 300mAh, 403035 400mAh, 403040 450mAh, 501240 200mAh, 501245 230mAh, 502030 300mAh, 502035 300mAh, 502035 370mAh, 502040 400mAh, 502248 500mAh, 502530 300mAh, 502535 400mAh, 502535 450mAh, 502540 500mAh, 503030 450mAh, 503035 500mAh, 503040 600mAh, 503040 680mAh, 503048 750mAh, 503759 1200mAh, 601230 180mAh, 601235 200mAh, 602025 250mAh, 602030 300mAh, 602035 400mAh, 602248 650mAh, 602530 400mAh, 602530 450mAh, 602535 500mAh, 602540 650mAh, 603030 500mAh, 603030 600mAh, 603035 600mAh, 603040 600mAh, 603040 650mAh, 603040 750mAh, 603040 800mAh, 603048 900mAh, 603450 1200mAh, 701535 320mAh, 702035 450mAh, 702040 500mAh, 702050 800mAh, 702530 500mAh, 702535 600mAh, 703040 800mAh, 703040 900mAh, 703048 1100mAh, 801350 500mAh, 802025 350mAh, 802035 500mAh, 802040 650mAh, 802045 750mAh, 802050 800mAh, 802530 600mAh, 802535 750mAh, 802540 800mAh, 803030 700mAh, 803035 800mAh, 803040 900mAh, 803040 1000mAh, 803450 1500mAh, 901635 480mAh, 902025 400mAh, 902535 800mAh, 102040 800mAh, 102050 1000mAh, 102530 800mAh, 102535 900mAh, 102540 1100mAh, 102550 1500mAh, 103030 900mAh, 103030 950mAh, 103035 1100mAh, 103040 1200mAh, 103048 1500mAh, 103450 2000mAh, 755060 3000mAh, 501225 110mAh, 583175 1900mAh

TEST REPORT

Report No.: NCT240221292XB1-1

Date: Jun.06, 2024

Page 3 of 4

Test Results by chemical method (Unit: mg/kg):**Test Method:**

No.	Test Item :	Test Method (Reference)	MDL(%)	Limit(%)	Result
1	Lead (Pb)	Acid digestion method, ICP-OES	0.0002	0.01	N.D.
2	Cadmium (Cd)	Acid digestion method, ICP-OES	0.0002	0.002	N.D.
3	Mercury (Hg)	Acid digestion method, ICP-OES	0.0002	0.0005	N.D.

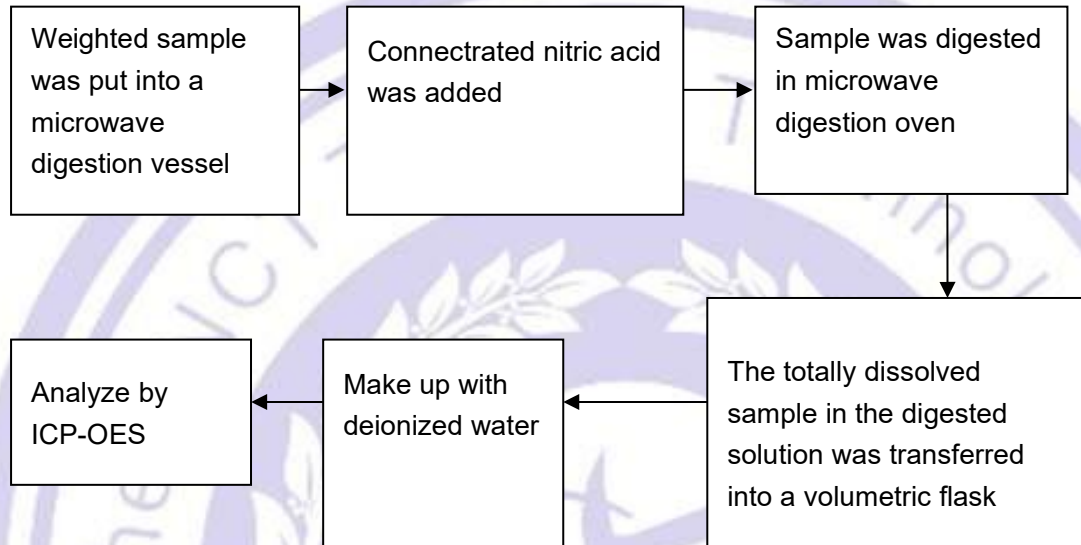
Note:

- (1) 1 mg/kg = 1 ppm = 0.0001%
- (2) N.D. = Not Detected (less than MDL)
- (3) MDL = Method Detection Limit
- (4) "--" = Not Regulated
- (5) Remark: According to the Article 13(5) of Directive EU 2023/1542, All batteries containing more than 0.002% cadmium or more than 0.004 % lead, shall be marked with the chemical symbol for the metal concerned Cd or Pb.

TEST REPORT

Test Flow

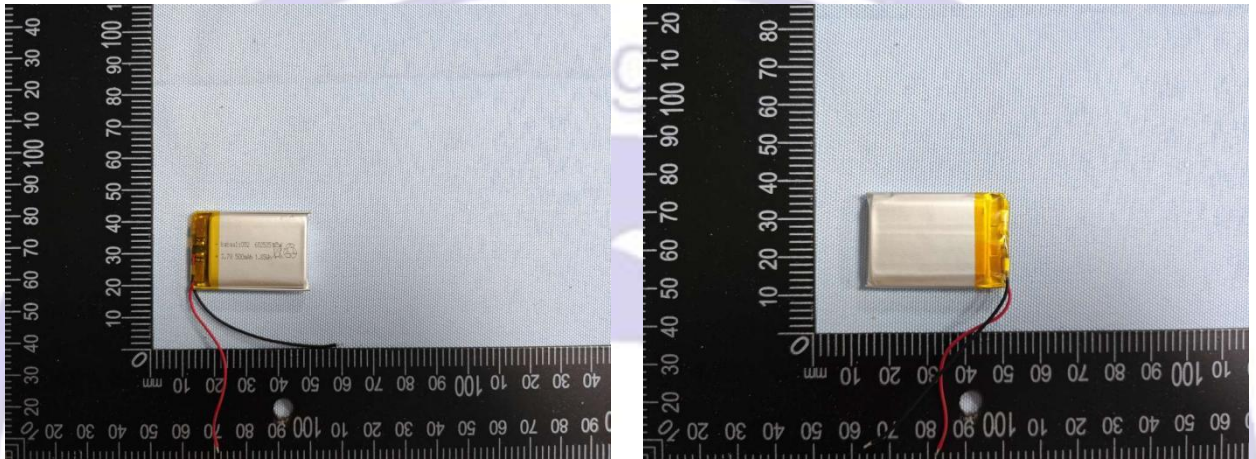
1. To Determine Lead, Cadmium and Mercury Contents:



TEST REPORT

Photos

Model: 602535



End of Report